

Brze spojke se univerzalno primjenjuju u industriji kako zbog iznimne lakoće spajanja tako zbog svestranosti uporabe u najrazličitijim područjima. Jednostavnost uporabe, ekstremna sigurnost i brzina spajanja uz veliki izbor raspoloživih materijala čine brze spojke savršenim rješenjem za kretanje i prijenos tekućine u kemijskoj, farmaceutskoj i prehrambenoj industriji.

Quick couplings are universally applied in industry both for their exceptionally easy coupling and for their universality of use in the most wide-ranging areas. The simplicity of use, extreme safety and the speed of coupling, along with a wide selection of available materials, make quick couplings a perfect solution for moving and transferring liquid in the chemical, pharmaceutical and food industries.

Artikl; Item: **RACFP**
Čep, muški
Tap, male



DN	Ø BSP
15	1/2"
20	3/4"
25	1"
32	1 1/4"
40	1 1/2"
50	2"
65	2 1/2"
80	3"
100	4"

Artikl; Item: **RACFF**
Čep, ženski
Tap, female



DN	Ø BSP
15	1/2"
20	3/4"
25	1"
32	1 1/4"
40	1 1/2"
50	2"
65	2 1/2"
80	3"
100	4"

Artikl; Item: **RACFCC**
Ženski s nastavkom
Female with extension



DN	Ø BSP
15	1/2"
20	3/4"
25	1"
32	1 1/4"
40	1 1/2"
50	2"
65	2 1/2"
80	3"
100	4"

Artikl; Item: **RACFFF**
Ženski, ženski navoj
Female, female thread



DN	Ø BSP
15	1/2"
20	3/4"
25	1"
32	1 1/4"
40	1 1/2"
50	2"
65	2 1/2"
80	3"
100	4"

Artikl; Item: **RACFFM**
Ženski, muški navoj
Female, male thread



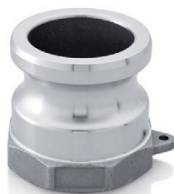
DN	Ø BSP
15	1/2"
20	3/4"
25	1"
32	1 1/4"
40	1 1/2"
50	2"
65	2 1/2"
80	3"
100	4"

Artikl; Item: **RACMCC**
Muški s nastavkom
Male with extension



DN	Ø BSP
15	1/2"
20	3/4"
25	1"
32	1 1/4"
40	1 1/2"
50	2"
65	2 1/2"
80	3"
100	4"

Artikl; Item: **RACMFF**
Muški, ženski navoj
Male, female thread



DN	Ø BSP
15	1/2"
20	3/4"
25	1"
32	1 1/4"
40	1 1/2"
50	2"
65	2 1/2"
80	3"
100	4"

Artikl; Item: **RACMFM**
Muški, muški navoj
Male, male thread



DN	Ø BSP
15	1/2"
20	3/4"
25	1"
32	1 1/4"
40	1 1/2"
50	2"
65	2 1/2"
80	3"
100	4"

Ostali fitinzi na upit; Other fittings on request.